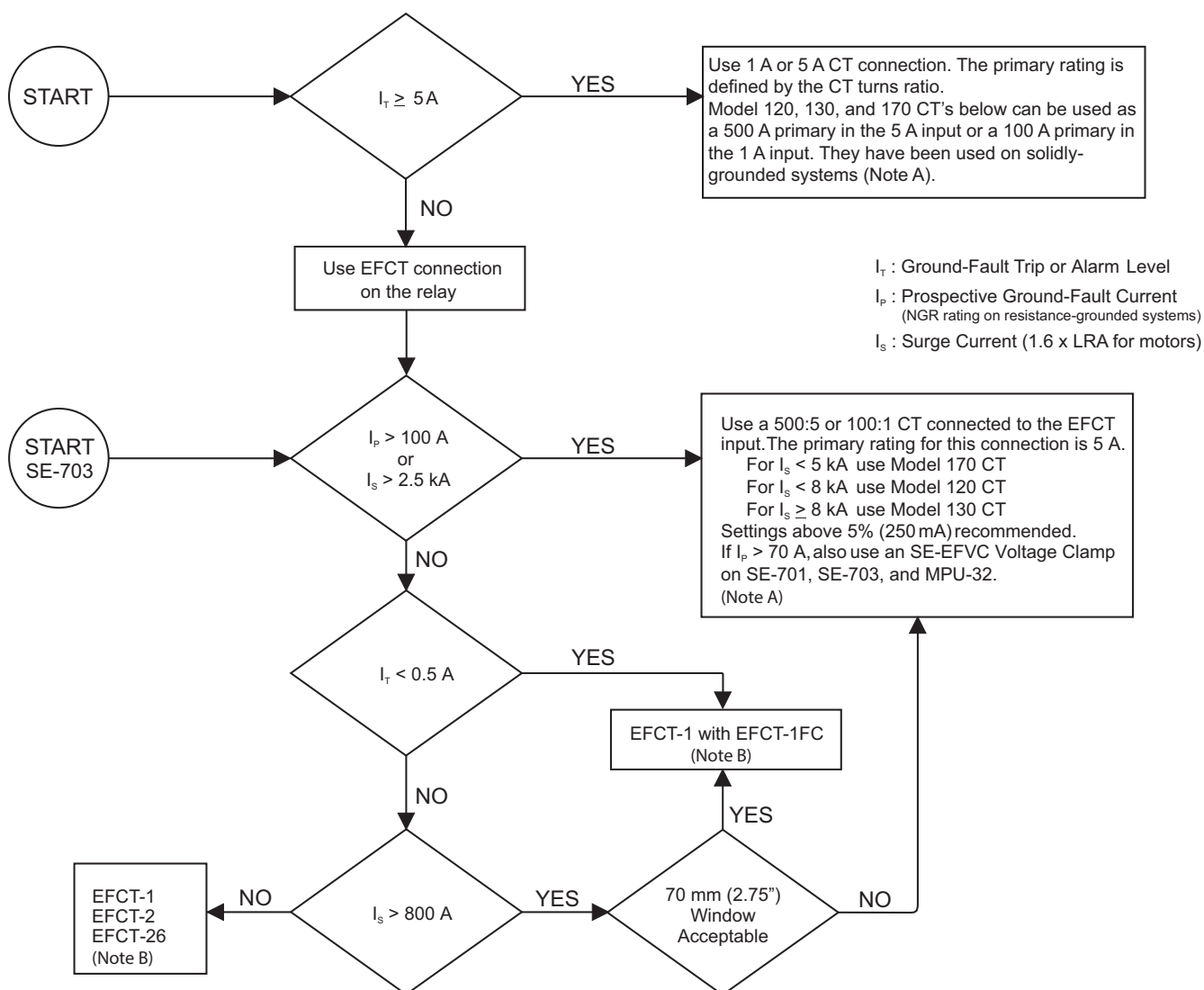


CT-01 : GROUND-FAULT-CT SELECTION GUIDE

Applicable Products: MPU-32, MPS, SE-330, SE-701, SE-703, FPU-32, FPS



Note A:

120-501-E: 500:5 Model 120 CT, 146 mm (5.75") window, 5 kg (11 lb)

130-501-E: 500:5 Model 130 CT, 146 mm (5.75") window, 8.2 kg (18 lb)

170SHT-501-E: 500:5 Model 170 CT, 108 mm (4.25") window, 1.4 kg (3 lb)

Other 500:5 or 100:1 CT's may work but the user should test to verify performance.

Note B:

EFCT-1: CT with no flux conditioner, 82 mm (3.23") window.

EFCT-1FC: EFCT-1 flux conditioner, 70 mm (2.75") window.

EFCT-2: CT complete with flux conditioner, 140 mm (5.50") window.

EFCT-26: CT with no flux conditioner, 26 mm (1") window.

See the "Monitoring Neutral-Grounding Resistors - An Update" paper for ground-fault settings in resistance-grounded applications.

Mouser Electronics

Authorized Distributor

Click to View Pricing, Inventory, Delivery & Lifecycle Information:

[Littelfuse:](#)

[170SHT-501-E](#)